

Tetra *test* GH

Instruction leaflet

Tetratest GH (General Hardness) For Freshwater

For an accurate determination of the general hardness (for freshwater).

Important: the Tetratest GH Test Kit is suitable for testing water from tropical and cold water aquariums or garden ponds. It should not be used for marine aquariums as the GH exceeds 250-300° dH.

Why test? Tap water and thus aquarium water demonstrate a variety of chemical characteristics depending largely on the water source used to fill them. One of the most important values of water quality is the general hardness. The Tetratest kit measures this value in German degrees of hardness °dH. The general hardness (GH) of the water is a measure of the dissolved calcium and magnesium salts. These salts directly influence the metabolism of fish, plants and microorganisms. Water with a high calcium and magnesium salt content is referred to as hard and with a low content as soft. Most freshwater fish thrive at a general hardness level between 6°–16° dH.

How to test for General Hardness (GH):

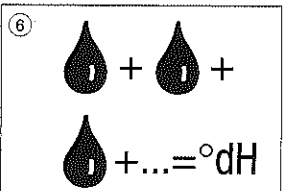
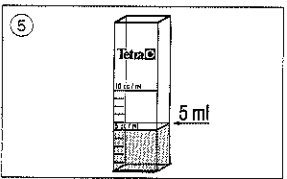
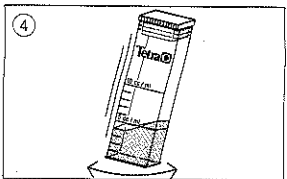
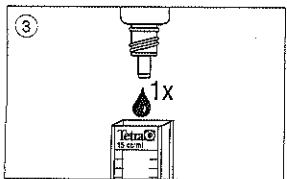
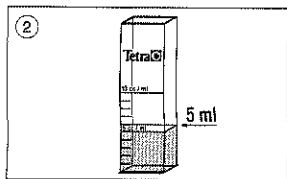
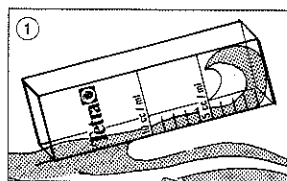
1. Rinse the test vial with the water to be tested.
2. Fill the test vial to the 5ml (cc.) mark with the water to be tested.
3. Hold the GH liquid reagent bottle upside down and add 1 drop at a time to the test vial.
4. Gently shake the vial after each drop and count the number of drops necessary to cause a color change from Red to Green.
5. The number of drops added until the color changes represents the level of hardness (German hardness).

After the Test: If the test results reveal excessive hardness (GH), this can be reduced by adding softer water, e.g. rainwater, distilled water, or water treated with a reverse osmosis unit. Water can also be softened by filtering it through peat.

Always condition your clean replacement water with Tetra AquaSafe to neutralize any dissolved chlorine and heavy metals.

WARNING - FLAMMABLE. EYE IRRITANT. CONTAINS PIPERAZINE, ERIOCHROME BLACK T, MENTANIL YELLOW, AND ETHYL ALCOHOL (ETHANOL).

Do not use near heat or flame. Avoid contact with eyes. In case of eye contact, immediately flush with plenty of water. Seek medical attention if irritation persists. Use only in a well-ventilated area. Keep out of reach of children.



Mal-Nr. 500897 USA

For more information contact:
Tetra Sales, USA
3001 Commerce Street
Blacksburg, VA 24060

TetraWerke GmbH
D-49304 Melle
Made in Germany

Tetra 
www.tetra-fish.com